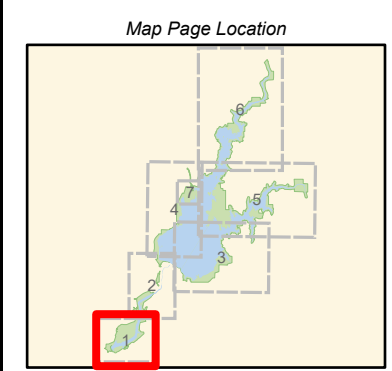


Erosion Severity

SOUTH LAKE NATOMA NIMBUS DAM

- Erosion Severity Along Trail**
- █ Critical
 - █ High
 - █ Moderate
 - █ Slight
- Erosion Severity Point of Significance**
- Critical
 - High
 - Moderate
 - Slight
- Trails**
- Unpaved Trails
 - Paved Park Trails
 - - - Trail on Roadbed
 - - - No Public Access
 - - - Non System Route
 - - - Other Agency Trail
- Roads**
- ▬ Unpaved Park Service Roads
 - ▬ Paved Park Service Roads
 - ▬ Unpaved Public Vehicular Roads
 - ▬ Paved Public Vehicular Roads
 - ▬ Other Agency Service Roads
 - ▬ Not Designated
- Other Symbols**
- Picnic Area
 - Parking Lot
 - River
 - Intermittent Stream
 - Waterbodies
 - County
 - Folsom Lake State Recreation Area and Folsom Powerhouse State Historic Park
 - CA Protected Lands
 - No Public Access



Page 1 of 7
 Scale
 1:18,080

 Feet
 0 400 800

NOTES:
 Parcel boundaries are approximate and should not be considered legal descriptions. Maps are intended for study purposes only.

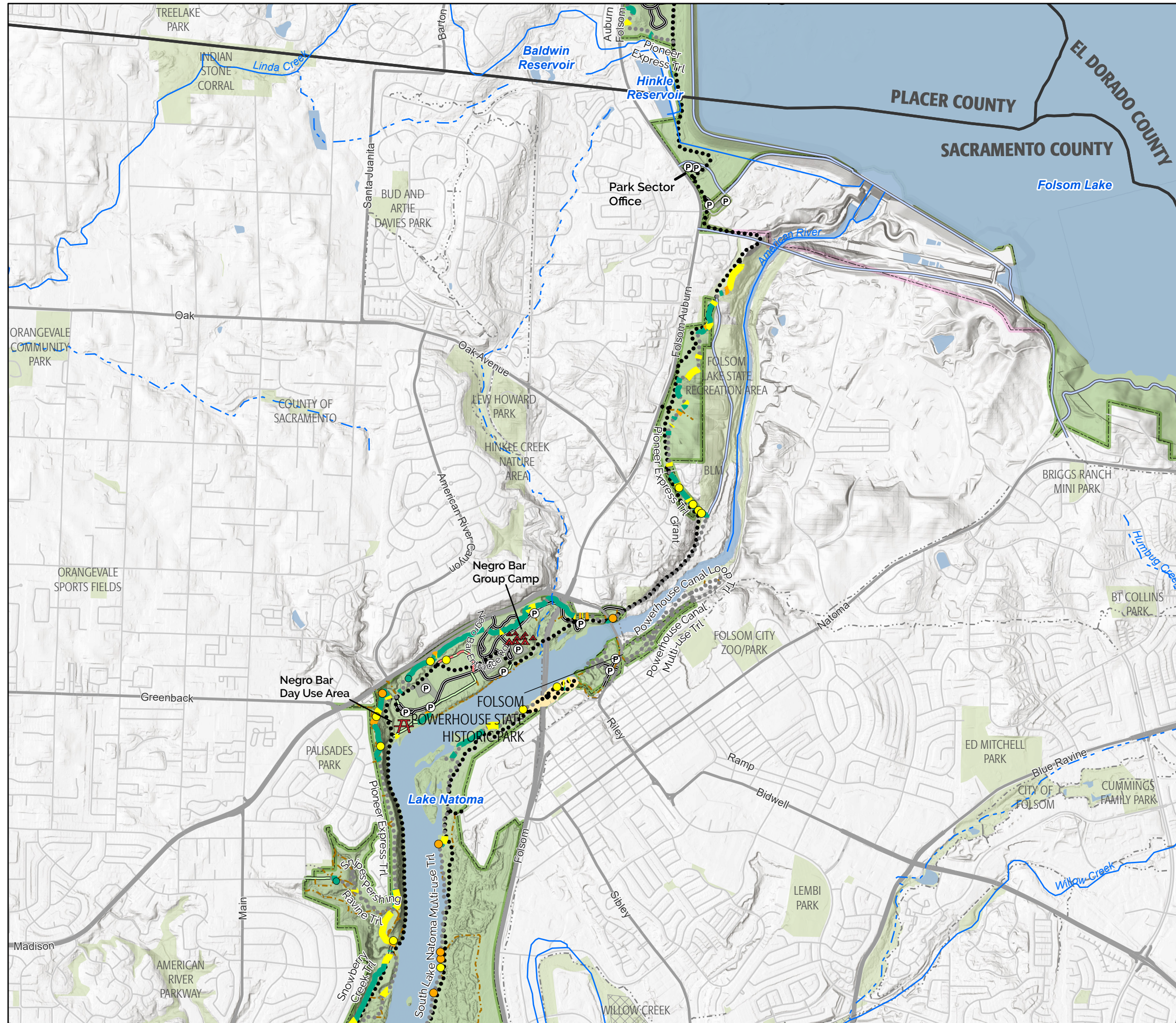
CALIFORNIA STATE PARKS GOLD FIELDS DISTRICT & STATEWIDE PLANNING & RECREATION SERVICES

Sources: California Dept. of Parks & Recreation; GreenInfo, Inc.; USGS

Date: 12/2/2021



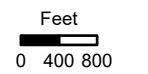
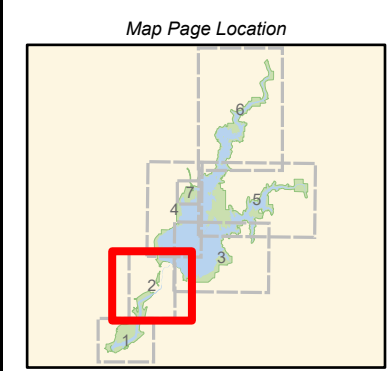
Folsom Area State Parks Road and Trail Management Plan



Erosion Severity

UPPER LAKE NATOMA TO FOLSOM DAM

- | | |
|---|---|
| Erosion Severity Along Trail | Trails |
| ■ Critical | ●●●● Unpaved Trails |
| ■ High | ●●●● Paved Park Trails |
| ■ Moderate | --- Trail on Roadbed |
| ■ Slight | ■ Accessible Trail |
| Erosion Severity Point of Significance | --- No Public Access |
| ● Critical | --- Non System Route |
| ● High | --- Other Agency Trail |
| ● Moderate | Roads |
| ● Slight | — Unpaved Park Service Roads |
| | — Paved Park Service Roads |
| | — Unpaved Public Vehicular Roads |
| | — Paved Public Vehicular Roads |
| | — Other Agency Service Roads |
| | — Hike, Bike and Horse |
| | — Not Designated |
| ▲ Picnic Area | □ County |
| ▲ Camp Area, Tent Only | ■ Folsom Lake State Recreation Area and Folsom Powerhouse State Historic Park |
| ▲ Group Camp Area | ■ Folsom Dam Operations |
| Ⓟ Parking Lot | ■ CA Protected Lands |
| — River | ⊠ No Public Access |
| — Intermittent Stream | |
| ■ Waterbodies | |



NOTES:
Parcel boundaries are approximate and should not be considered legal descriptions. Maps are intended for study purposes only.

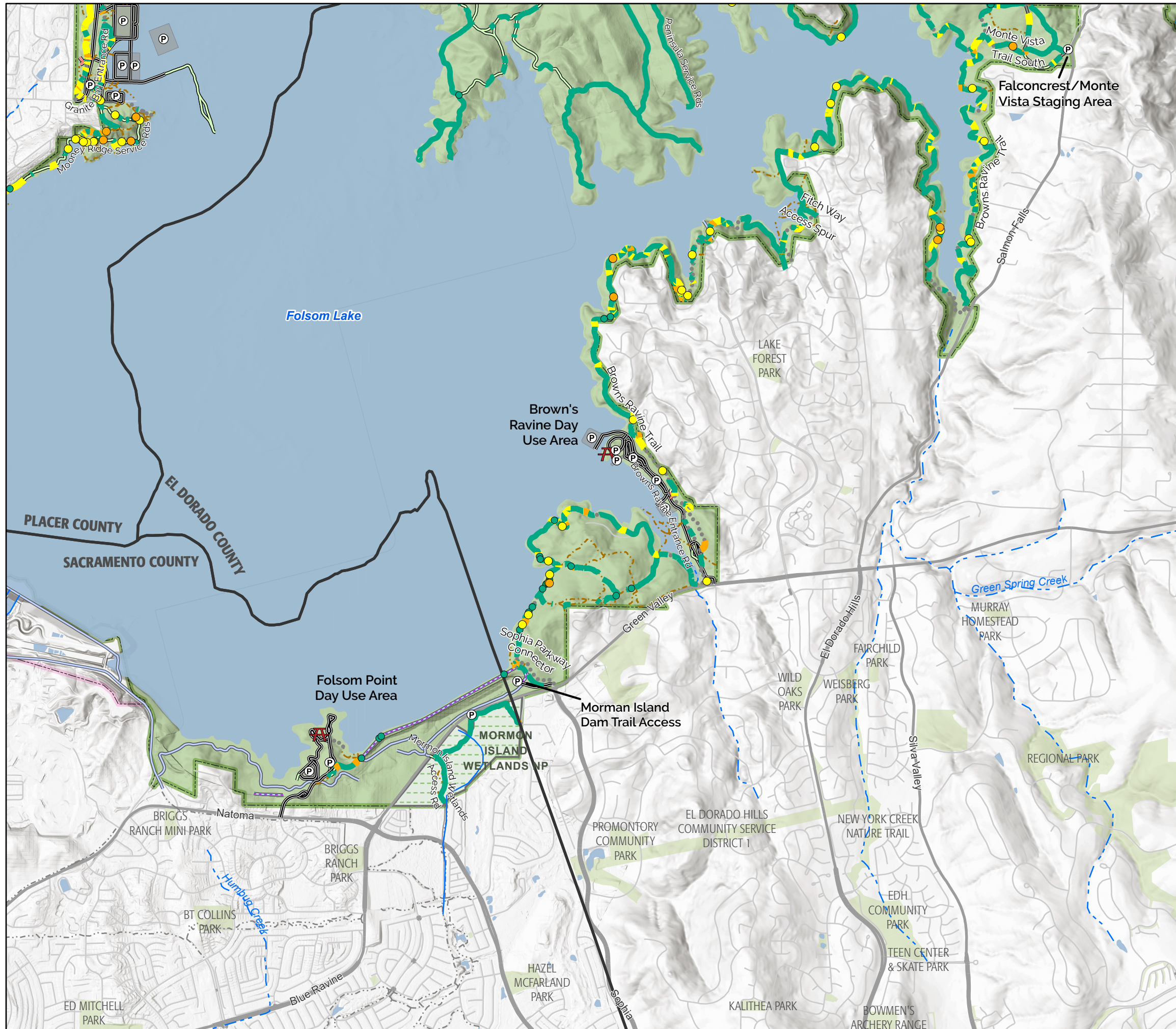
CALIFORNIA STATE PARKS GOLD FIELDS DISTRICT & STATEWIDE PLANNING & RECREATION SERVICES

Sources: California Dept. of Parks & Recreation; GreenInfo, Inc.; USGS

Date: 12/2/2021



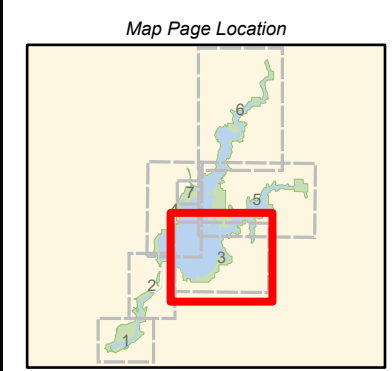
Folsom Area State Parks Road and Trail Management Plan



Erosion Severity

BROWNS RAVINE

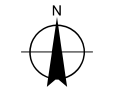
- | | |
|--|---|
| Erosion Severity Along Trail | Trails |
| ■ Critical | ●●●● Unpaved Trails |
| ■ High | — · — Trail on Roadbed |
| ■ Moderate | - - - No Public Access |
| ■ Slight | - · - · Non System Route |
| | - · - · Other Agency Trail |
| Erosion Severity Point of Significance | Roads |
| ● Critical | — Unpaved Park Service Roads |
| ● High | == Paved Park Service Roads |
| ● Moderate | — Unpaved Public Vehicular Roads |
| ● Slight | == Paved Public Vehicular Roads |
| | — Other Agency Service Roads |
| | — Hike, Bike and Horse |
| | — Not Designated |
| Other Symbols | |
| Picnic Area | County |
| Parking Lot | Folsom Lake State Recreation Area and Folsom Powerhouse State Historic Park |
| River | Folsom Dam Operations |
| Intermittent Stream | Natural Preserves |
| Waterbodies | CA Protected Lands |



Page 3 of 7

Scale

1:30,950



Feet
0 400800

NOTES:
Parcel boundaries are approximate and should not be considered legal descriptions. Maps are intended for study purposes only.

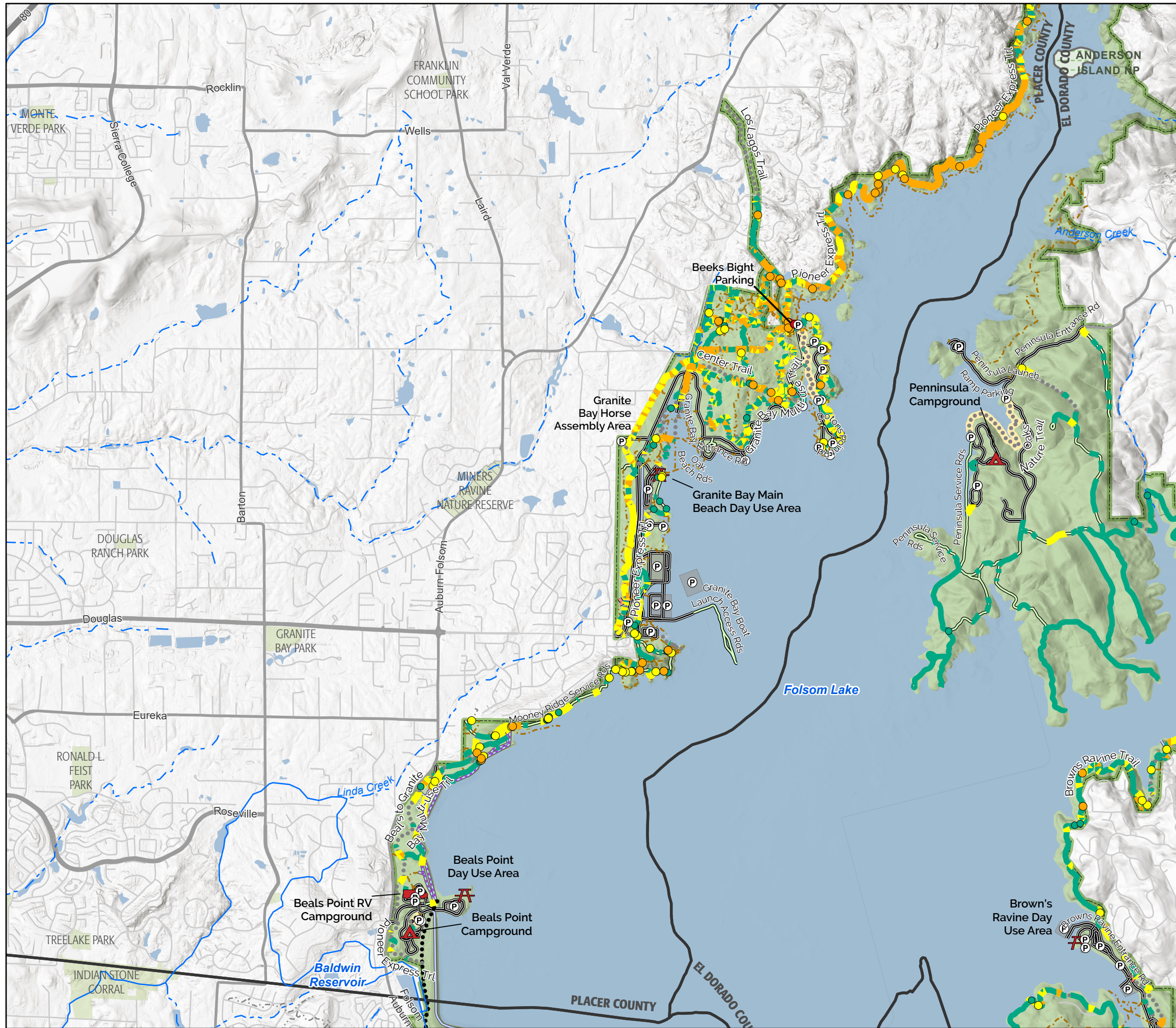
CALIFORNIA STATE PARKS GOLD FIELDS DISTRICT & STATEWIDE PLANNING & RECREATION SERVICES

Sources: California Dept. of Parks & Recreation; GreenInfo, Inc.; USGS

Date: 12/2/2021



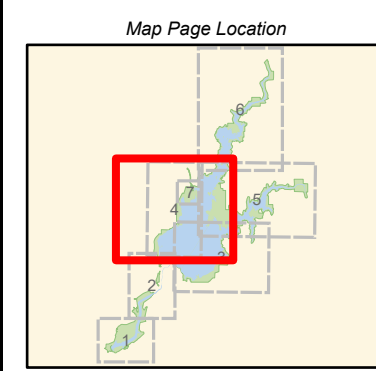
Folsom Area State Parks Road and Trail Management Plan



Erosion Severity

BEALS POINT / GRANITE BAY

- | | |
|---|---|
| Erosion Severity Along Trail | Trails |
| ■ Critical | ●●●● Unpaved Trails |
| ■ High | ●●●● Paved Park Trails |
| ■ Moderate | ■ Accessible Trail |
| ■ Slight | --- No Public Access |
| Erosion Severity Point of Significance | --- Non System Route |
| ● Critical | --- Other Agency Trail |
| ● High | Roads |
| ● Moderate | — Unpaved Park Service Roads |
| ● Slight | — Paved Park Service Roads |
| | — Unpaved Public Vehicular Roads |
| | — Paved Public Vehicular Roads |
| | Other Agency Service Roads |
| | — Hike, Bike and Horse |
| | — Not Designated |
| ▲ Picnic Area | □ County |
| ▲ Camp Area, Tent Only | ■ Folsom Lake State Recreation Area and Folsom Powerhouse State Historic Park |
| ▲ Camp Area with Hookups | ■ Natural Preserves |
| ▲ Developed Camp Area | ■ CA Protected Lands |
| Ⓟ Parking Lot | ▨ Restricted Access |
| — River | |
| — Intermittent Stream | |
| ■ Waterbodies | |



Page 4 of 7

Scale
1:35,590

North Arrow

Feet
0 400 800

NOTES:
Parcel boundaries are approximate and should not be considered legal descriptions. Maps are intended for study purposes only.

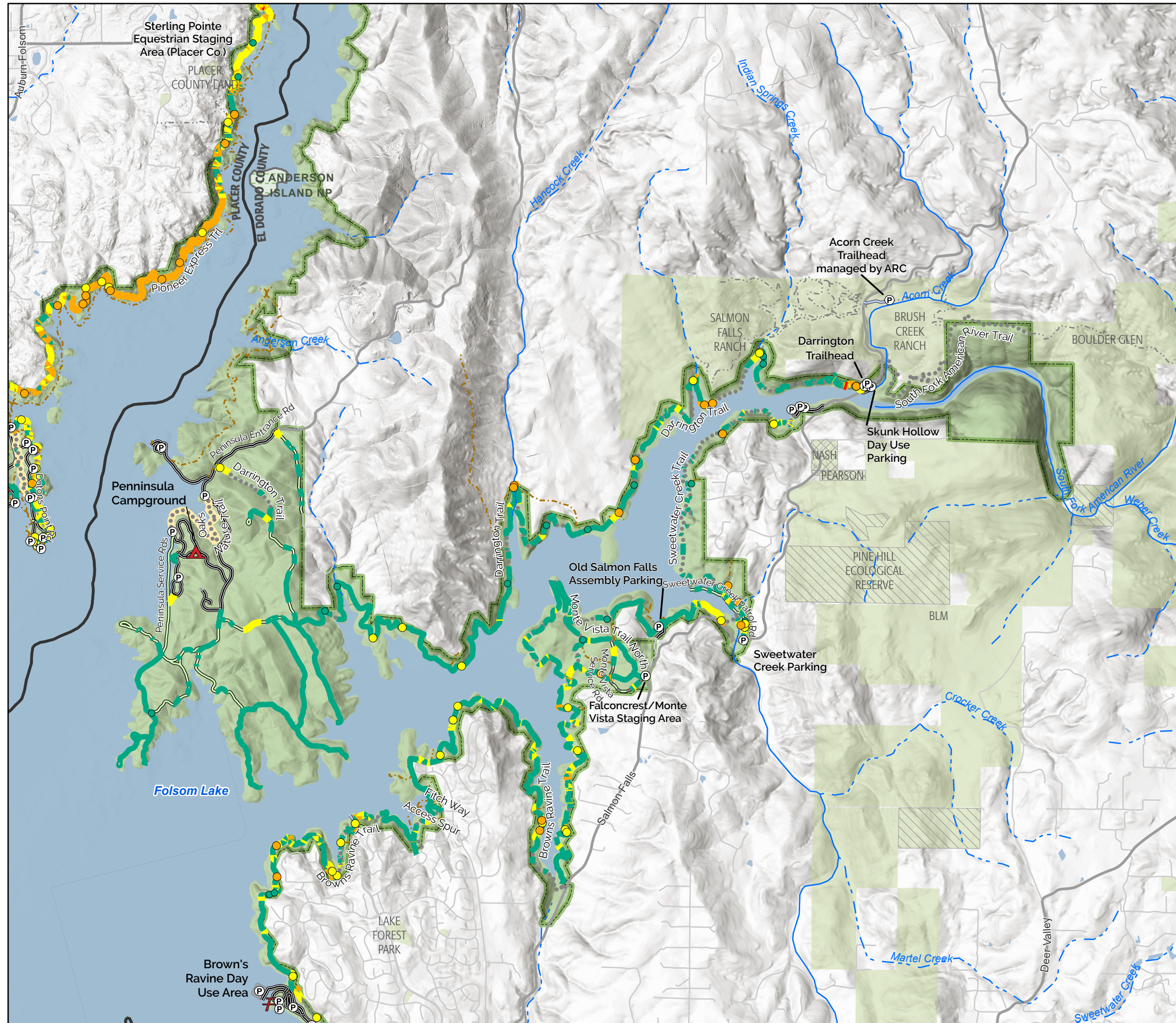
CALIFORNIA STATE PARKS GOLD FIELDS DISTRICT & STATEWIDE PLANNING & RECREATION SERVICES

Sources: California Dept. of Parks & Recreation; GreenInfo, Inc.; USGS

Date: 12/2/2021



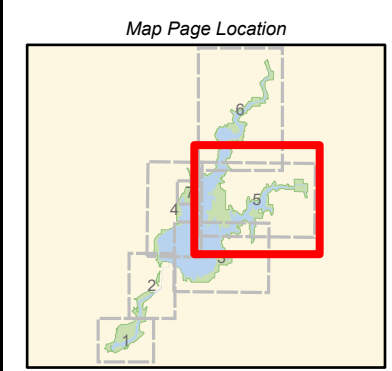
Folsom Area State Parks Road and Trail Management Plan



Erosion Severity

SOUTH FORK AMERICAN RIVER

- | | |
|---|---|
| Erosion Severity Along Trail | Trails |
| ■ Critical | ●●●● Unpaved Trails |
| ■ High | ●●●● Paved Park Trails |
| ■ Moderate | --- Trail on Roadbed |
| ■ Slight | ■ Accessible Trail |
| Erosion Severity Point of Significance | --- No Public Access |
| ● Critical | --- Non System Route |
| ● High | --- Other Agency Trail |
| ● Moderate | Roads |
| ● Slight | — Unpaved Park Service Roads |
| | — Paved Park Service Roads |
| | — Unpaved Public Vehicular Roads |
| | — Paved Public Vehicular Roads |
| | — Other Agency Service Roads |
| | — Not Designated |
| ▲ Picnic Area | □ County |
| ▲ Developed Camp Area | ■ Folsom Lake State Recreation Area and Folsom Powerhouse State Historic Park |
| Ⓟ Parking Lot | ■ Natural Preserves |
| — River | ■ CA Protected Lands |
| --- Intermittent Stream | ▨ No Public Access |
| ■ Waterbodies | ▨ Restricted Access |



Page 5 of 7
 Scale
 1:38,000
 N
 Feet
 0 40 800

NOTES:
 Parcel boundaries are approximate and should not be considered legal descriptions. Maps are intended for study purposes only.

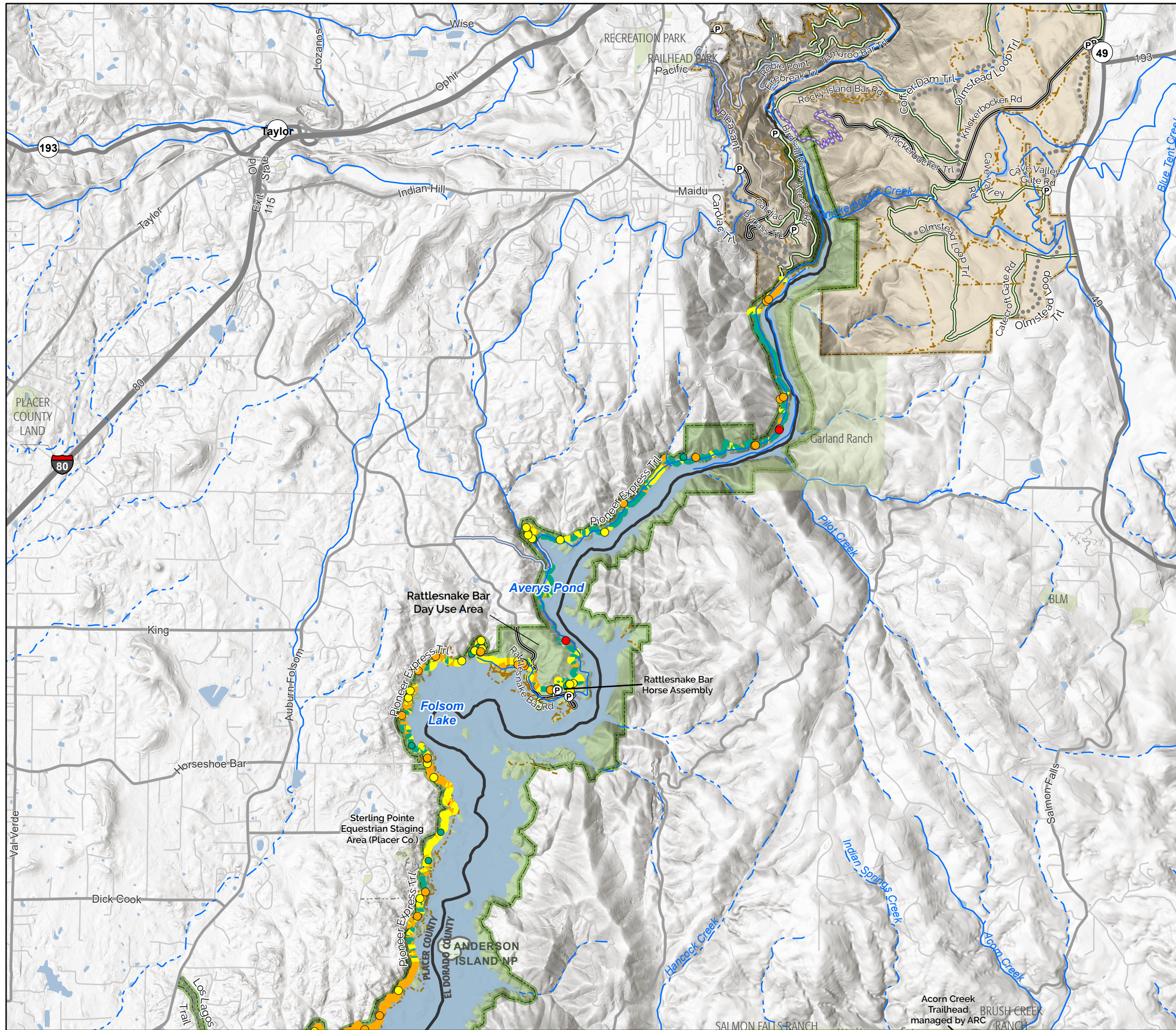
CALIFORNIA STATE PARKS GOLD FIELDS DISTRICT & STATEWIDE PLANNING & RECREATION SERVICES

Sources: California Dept. of Parks & Recreation; GreenInfo, Inc.; USGS

Date: 12/2/2021



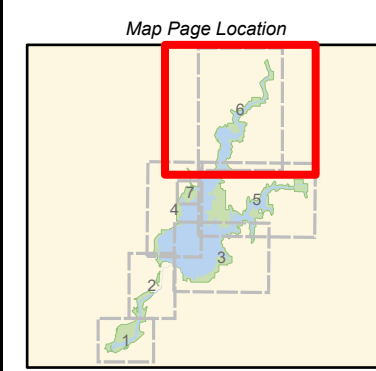
Folsom Area State Parks Road and Trail Management Plan



Erosion Severity

NORTH FORK AMERICAN RIVER

- | | |
|---|---|
| Erosion Severity Along Trail | Trails |
| ■ Critical | ●●●● Unpaved Trails |
| ■ High | - - - No Public Access |
| ■ Moderate | - · - · Non System Route |
| ■ Slight | - - - - Other Agency Trail |
| Erosion Severity Point of Significance | Roads |
| ● Critical | — Unpaved Park Service Roads |
| ● High | — Paved Park Service Roads |
| ● Moderate | — Unpaved Public Vehicular Roads |
| ● Slight | — Paved Public Vehicular Roads |
| | Other Agency Service Roads |
| | — Hike, Bike and Horse |
| | — Not Designated |
| Ⓟ Parking Lot | ▭ County |
| — River | ▭ Folsom Lake State Recreation Area and Folsom Powerhouse State Historic Park |
| — Intermittent Stream | ▭ Auburn State Recreation Area |
| ■ Waterbodies | ▭ Natural Preserves |
| | ▭ CA Protected Lands |



Page 6 of 7
 Scale
 1:45,760
 N
 Feet
 040800

NOTES:
 Parcel boundaries are approximate and should not be considered legal descriptions. Maps are intended for study purposes only.

CALIFORNIA STATE PARKS GOLD FIELDS DISTRICT & STATEWIDE PLANNING & RECREATION SERVICES

Sources: California Dept. of Parks & Recreation; GreenInfo, Inc.; USGS

Date: 12/2/2021



Erosion Severity

HOFFMAN PROPERTY

Erosion Severity Along Trail

- █ Critical
- █ High
- █ Moderate
- █ Slight

Erosion Severity Point of Significance

- Critical
- High
- Moderate
- Slight

Trails

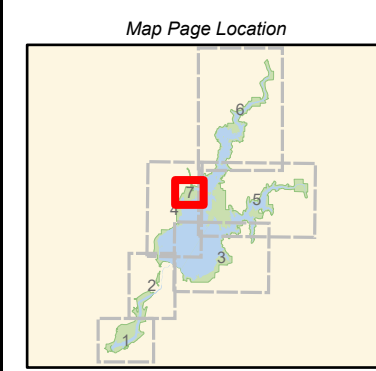
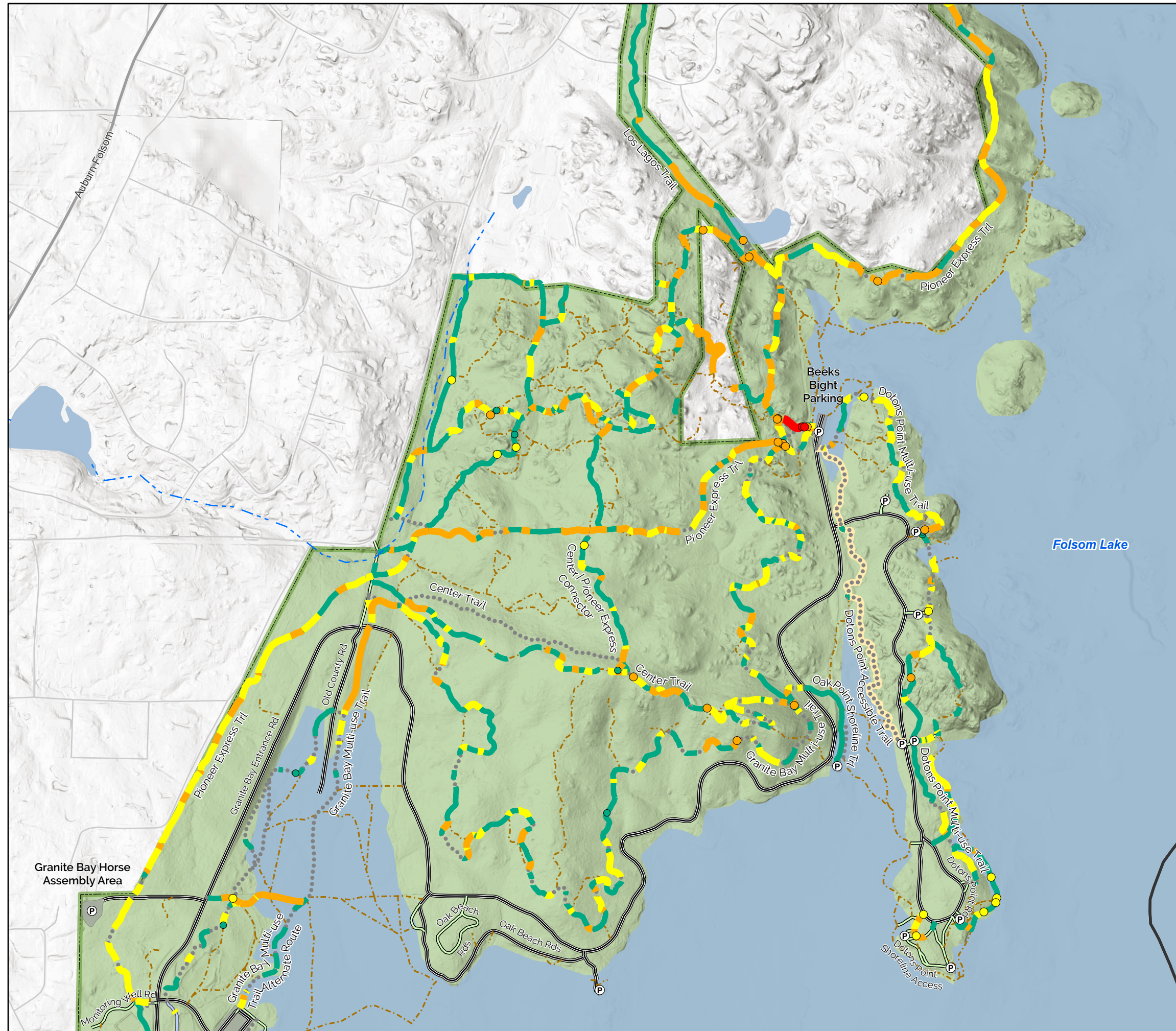
- Unpaved Trails
- █ Accessible Trail
- - - No Public Access
- - - Non System Route
- - - Other Agency Trail

Roads

- █ Unpaved Park Service Roads
- █ Paved Park Service Roads
- █ Unpaved Public Vehicular Roads
- █ Paved Public Vehicular Roads
- █ Other Agency Service Roads
- █ Not Designated

- P Parking Lot
- - - Intermittent Stream
- █ Waterbodies

- County
- Folsom Lake State Recreation Area and Folsom Powerhouse State Historic Park



Page 7 of 7
 Scale
 1:8,680
 Feet
 0 400 800

NOTES:
 Parcel boundaries are approximate and should not be considered legal descriptions. Maps are intended for study purposes only.

CALIFORNIA STATE PARKS GOLD FIELDS DISTRICT & STATEWIDE PLANNING & RECREATION SERVICES

Sources: California Dept. of Parks & Recreation; GreenInfo, Inc.; USGS

Date: 12/2/2021

